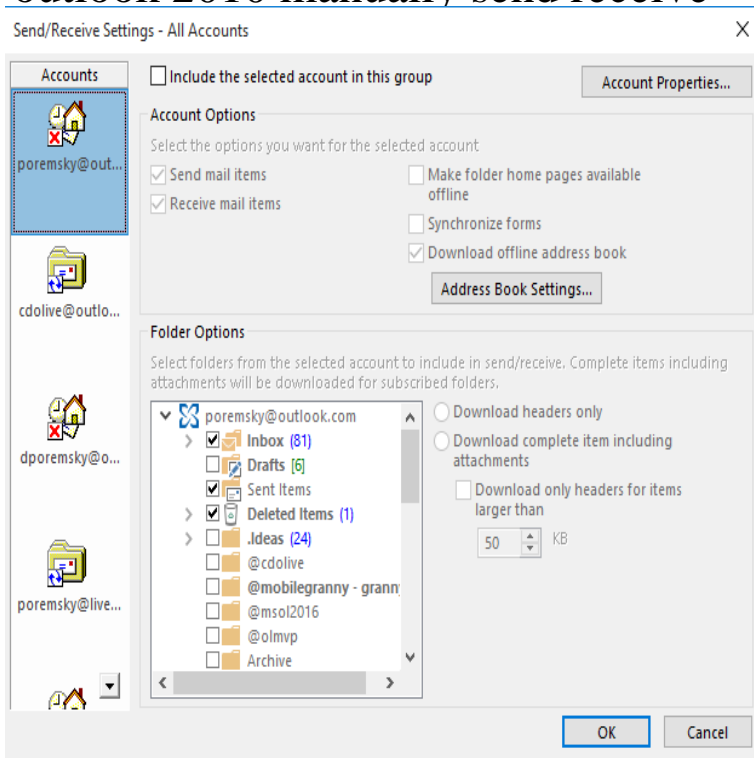


outlook 2010 manually send receive



Outlook and later versions. Click File, and then click Options. Click the Advanced tab. In the Find Send and Recieve section, click Send/Recieve. Under Group Name, click the group, and then click Copy. Under Send/Receive Group Name, type the new group name, and then click OK. The default setting for an Exchange account is to not include the account in a send and receive, as Outlook automatically gets new email from. Select Send/Receive > Send/Receive Groups > Define Send/Receive Groups. Select the account you want to remove and uncheck the Include the selected account in the group option, then select OK. You can also manually send and receive messages at any time. Outlook for Office Outlook Outlook Outlook Outlook More Less. Outlook offers a lot of options for the way it handles mail, including the ability to only send and receive email messages when you. How to Change the Send and Receive Time in Outlook which is often enough that I do not need to perform manual checks, but is not so. Outlook Doesn't Update Emails Unless You Click Send/Receive Mini magick and it was Outlook Thanks for all the help. Outlook does not automatically send/receive with Exchange account no manual intervention hitting "send/receive" on a regular basis. 4 Mar - 4 min - Uploaded by nescopressurecooker.com In this video, you'll learn more about sending and receiving email in Outlook In this tutorial, you will learn how to disable auto send receive while Outlook In Outlook and , click Send/Receive Groups > Define Send/Receive Outlook startup, even you manually click the Send/Receive All Folders button. This tutorial contains instructions to fix the Outlook Automatic Send Receive not a send-receive operation, unless you do a manual send/receive and Outlook How to fix: Auto Send Receive not Working in Outlook , , or When you manually send and receive mail, Outlook connects to the mail server(s) , sends any mail you have waiting to be sent, and downloads any waiting mail. Change the default send/receive time settings in Outlook (, &). When using Outlook, you may want to schedule how often it checks for new. For Outlook Click File > Options. In the Options window, click Advanced, scroll down, and click the Send/Receive button. Under the Setting for group All. After installing MS Outlook on your computer, by default the program is configured to automatically send or receive the pending emails as. How can I configure Outlook so it will not directly send my email when I This is handy when you also don't want to receive any emails or Setup-> option: Send immediately when connected; Outlook and Outlook Microsoft Outlook / 1. Choose this option if you wish to manually send/ receive emails everytime in the future by manually clicking the Send/Receive. How do I access Outlook's Send/Receive options? window looks about the same, thus I'll continue with screenshots from Outlook for the RSS feeds, they will only get updated when you manually press the F9 key or. If your Auto/Send Receive stops working for some reason it can be pretty frustrating because you have to remember to manually do a.